

# THE **KNOWLEDGE** YOU NEED **TO LEAD** AND CARE FOR **OTHERS**

Your Guide to Getting a Doctoral  
Degree in Health Related Disciplines



CAPELLA UNIVERSITY



## 9 REASONS TO GET A DOCTORAL DEGREE

### 1 YOU'LL HAVE PLENTY OF JOB OPTIONS.

The Affordable Care Act has changed health care, and new roles are opening up in health compliance, data management, informatics, patient experience, and health care administration. Employers are looking for professionals with the knowledge and expertise to lead others in this transformed landscape.

### 2 YOU'LL LEARN NEW SKILLS.

Earning a doctoral degree will expand your skill set and your ability to grapple with significant problems. You'll examine systemic problems and learn how to develop and lead research- and evidence-based improvement initiatives that make a difference in how health care works.

### 3 YOU'LL SUPPORT THE TRIPLE AIM.

When the Institute for Healthcare Improvement\* recommended simultaneously pursuing three main goals for health care systems—reduce per capita health care costs, improve population health and outcomes, and improve the individual patient experience—it became clear that many organizations would need to develop new ways of delivering care. Success means breaking down silos, removing barriers, and fostering collaboration that result in fresh and effective solutions.

SOURCE: The ROI of an Advanced Health Care Degree.

## 9 REASONS TO GET A DOCTORAL DEGREE (continued)

### 4 | YOU'LL HAVE ACCESS TO MORE CAREER OPPORTUNITIES.

A doctoral degree broadens the range of career opportunities—promotions, specialties, leadership engagements—available to professionals in health care. The new jobs aren't being filled by industry outsiders; many organizations are looking for current health executives who have modernized their skills.

### 5 | YOU'LL MAKE MORE MONEY.

Advanced degrees can make a significant difference in pay in health care. Researchers at Georgetown University\* found that an advanced degree in health care enables many professionals in the industry to more than double their average wages.

SOURCE: The ROI of an Advanced Health Care Degree.

### 6 | YOU CAN TEACH AT THE COLLEGIATE LEVEL.

If you want to shape the next generation of health care professionals, you've probably considered the idea of teaching. Respected colleges and universities require instructors to have advanced degrees. Outstanding applicants for such positions often have doctoral degrees in health care, and they possess a research background that impresses colleagues and students alike.

## 9 REASONS TO GET A DOCTORAL DEGREE (continued)

### 7 YOU'LL HAVE A SENSE OF PERSONAL ACHIEVEMENT.

For many people, obtaining an advanced degree is a life goal. A doctoral degree indicates that you've reached the pinnacle of your field and have an understanding of the field that encompasses everything you need to know to lead. Regardless of your future path, you'll have the satisfaction of knowing you've earned top honors in your discipline.

### 8 YOU'LL IMPACT CHANGE THROUGH SCHOLARSHIP.

A doctoral degree prepares you to be a scholar. Your education can help ignite new practices, new information, and new standards of care. Your doctoral studies will equip you with the skills to dissect and understand the most important evidence-based research and improvement initiatives in health care.

### 9 YOU'LL MAKE A DIFFERENCE.

People go into health care because they want to make a difference—whether it's affecting the lives of a few individuals or transforming the health of people around the world. With a doctoral degree, you'll be able to work at a level that brings about wide and impactful change—making a true difference in your field.





# HEALTH ADMINISTRATION

Health administrators lead and influence a variety of health care environments. They also are involved in public policy, advocacy, research, teaching, and consulting.

## CAREER OUTLOOK

Employment of health services leaders is projected to increase 17% by 2024\* as health care needs rise among aging Baby Boomers, health care reforms are enacted, and health insurance becomes more widely available. An increased incidence of chronic disease and a growing emphasis on preventive medicine will also generate new jobs.

SOURCE: U.S. Bureau of Labor Statistics



# HEALTH ADMINISTRATION (continued)



## IN-DEMAND POSITIONS

Demand has surged for professionals who can plan and direct the delivery of health care, in areas ranging from financial operations to patient safety to care coordination.

### JOB TITLES INCLUDE:

- Chief executive officer
- Chief operating officer
- Clinic director
- College or university faculty
- Government relations director
- Health care consultant
- Health policy analyst
- Insurance executive
- Hospital business manager
- Nursing home director
- Nurse manager
- Program director
- Public affairs executive
- Regulatory director
- Research analyst or director

### EMPLOYERS INCLUDE:

- Ambulatory health care services
- Colleges and universities
- Community care facilities
- Consulting firms
- Federal government
- Health care facilities
- Hospitals
- Insurance companies
- Medical and diagnostic labs
- Nonprofits
- Outpatient care centers
- Residential care facilities
- Social welfare agencies

## IMPORTANCE OF A DOCTORAL DEGREE

With the new Affordable Care Act guidelines and the Institute for Health Improvement's Triple Aim, there's an increased need for health administrators who are experts in policies, planning, risk management, and regulatory compliance. Health care organizations need leaders who can help them adapt in this era of accountable care.

# HEALTH ADMINISTRATION (continued)



## CAPELLA UNIVERSITY HEALTH ADMINISTRATION DOCTORAL DEGREES

Capella is a participant in the American College of Healthcare Executives (ACHE) Higher Education Network. The Doctor of Health Administration (DHA) program is aligned to the National Center for Healthcare Leadership (NCHL) competency model.

### DOCTOR OF HEALTH ADMINISTRATION (DHA) IN GENERAL HEALTH ADMINISTRATION

This program is designed for health administration practitioners who want to develop leadership competencies in health administration while driving system changes. Curriculum includes contemporary leadership roles, strategic vision and planning, evidence-based leadership, and policy advocacy and analysis.

#### Successful graduates are prepared to:

- Facilitate organizational transformation and change processes in a variety of health care settings.
- Implement strategic planning and health care administration strategies for optimal organizational performance.
- Support vision and ethical leadership decision making in health care administration.

### DOCTOR OF HEALTH ADMINISTRATION (DHA) IN HEALTH CARE LEADERSHIP

This program emphasizes evidence-based leadership and management, with a particular focus on curriculum that includes contemporary leadership roles, strategic vision and planning, and performance measurement and management.

#### Successful graduates are prepared to:

- Lead organizational transformation by creating an organizational climate that promotes personal and professional growth.
- Design strategies to optimize organizational effectiveness.
- Promote research to improve health care systems.



# HEALTH ADMINISTRATION (continued)

## CAPELLA UNIVERSITY HEALTH ADMINISTRATION DOCTORAL DEGREES

### DOCTOR OF HEALTH ADMINISTRATION (DHA) IN HEALTH POLICY AND ADVOCACY

This program focuses on national and global perspectives of health policy and policy advocacy and analysis. It's designed to direct the understanding of advanced-level health policy advocacy concepts, theories, and techniques toward professional practice.

**Successful graduates are prepared to:**

- Lead positive community-oriented health outcomes.
- Influence health policy change.

### DOCTOR OF HEALTH ADMINISTRATION (DHA) IN HEALTH CARE QUALITY AND ANALYTICS

This program is designed for health administrators who want to lead an organizational culture of safety. Students develop proficiency in quality improvement, risk assessment, communication, legal issues, and strategies that contribute to performance management and process improvement.

**Successful graduates are prepared to:**

- Drive quality and performance improvement activities through the use of data analytics.
- Assure accountability and reliability in quality and safety improvement initiatives.
- Build a culture of safety in a variety of health care settings.





## MENTAL HEALTH

Mental health professionals work with a wide variety of populations in many different capacities. In addition to providing direct patient care as a licensed practitioner, mental health professionals may also train others, supervise others, or serve as program administrators.

A solid educational foundation and the right credentials are key to success in the field.

### CAREER OUTLOOK

Due to health care reform, access to mental health prevention and treatment services is expected to increase. Employment of mental health practitioners is projected to grow 12% from 2014 to 2024\*. In order to prepare the needed mental health care providers, university faculty with a doctorate, supervisors with advanced training, and licensed psychologists will help meet this demand.

SOURCE: U.S. Bureau of Labor Statistics





# MENTAL HEALTH (continued)

## IN-DEMAND POSITIONS

### JOB TITLES INCLUDE:

- Care coordination manager
- Clinical director
- Clinical instructor
- College or university faculty or administrator
- Health and social service manager
- Mental health program manager
- Program director
- Social services director

### EMPLOYERS INCLUDE:

- Colleges and universities
- Community counseling centers
- Consulting firms
- Research organizations
- Hospitals
- Health clinics
- Government agencies
- Law enforcement
- Social service agencies

## IMPORTANCE OF A DOCTORAL DEGREE

As you consider roles in leadership, supervision, or higher education, a doctorate builds upon your experience as a mental health practitioner.



# MENTAL HEALTH (continued)

## CAPELLA UNIVERSITY MENTAL HEALTH DOCTORAL DEGREES

### DOCTOR OF SOCIAL WORK (DSW)

This program expands on fundamental social work knowledge and skills. Students explore the radical changes in the ways people network, form relationships, communicate, and view themselves, and capitalize on connecting with clients by using new and evolving technologies.

#### **Successful graduates are prepared to:**

- Lead social service programs.
- Advocate for social justice for diverse populations.
- Share advanced knowledge with future social workers.

### DOCTOR OF PSYCHOLOGY (PsyD) IN CLINICAL PSYCHOLOGY

This rigorous scholar-practitioner program provides students with comprehensive clinical training, based on theoretical and scientific foundations of psychology, including psychological assessment and intervention.

#### **Successful graduates are prepared to:**

- Meet state licensure requirements.
- Administer guidance and insight consistent with the ethics and laws pertaining to professional psychology.
- Understand, respect, and apply issues of diversity.
- Provide effective and appropriate psychological intervention to clients while integrating science and theory into practice.



# MENTAL HEALTH (continued)

## CAPELLA UNIVERSITY MENTAL HEALTH DOCTORAL DEGREES

### PhD IN COUNSELOR EDUCATION AND SUPERVISION

This CACREP-accredited\* program provides counseling professionals with clinical, teaching, and supervisory skills. Students build their skills through instruction in counseling/therapy, clinical mental health supervision, and leadership and advocacy.

#### **Successful graduates are prepared to:**

- Work as counselor educators, supervisors, researchers, and advanced practitioners.
- Lead and advocate for inclusion, tolerance, and acceptance.
- Conduct and contribute valid, reliable, and ethical research in the counseling profession.

\*Capella University's PhD in Counselor Education and Supervision, MS in Mental Health Counseling, MS in School Counseling, and MS in Marriage and Family Counseling/Therapy programs are accredited by the American Counseling Association's Council for Accreditation of Counseling and Related Educational Programs (CACREP) through March 31, 2020.



## PUBLIC HEALTH

The profile of public health professionals has been dramatically raised with the implementation of the Affordable Care Act. The new law addresses population health management while adding new funding sources, new health entities, and a focus on innovation.

### CAREER OUTLOOK

As health systems and governmental agencies focus on population health priorities, experts in public health will continue to be in demand, with occupations expected to grow 23% between 2012 and 2022\*.

What's more, organizations will be looking for public health leaders who can improve the health of populations and communities through evidence-based problem solving that help transform systems.

SOURCE: U.S. Bureau of Labor Statistics





# PUBLIC HEALTH (continued)

## IN-DEMAND POSITIONS

Specialists in epidemiology, biostatistics, environmental health, and public health administration are just some of the key public health personnel that organizations frequently hire to improve and protect the health of families and communities.

### JOB TITLES INCLUDE:

- College or university faculty
- Community health program manager
- Disease surveillance specialist
- Epidemiologist
- Health researcher
- Health specialist
- Infection prevention professional
- Principal investigator
- Program director
- Public health analyst or advisor
- Research analyst

### EMPLOYERS INCLUDE:

- Colleges and universities
- Consulting firms
- Government agencies
- Health departments
- Health research and advocacy institutes
- Nonprofits
- Public health agencies
- Research organizations
- Social welfare organizations

## IMPORTANCE OF A DOCTORAL DEGREE

Opportunities for professionals with advanced degrees in public health abound in both the federal and private sector. Such jobs require familiarity with evidence-based problem-solving and the ability to conduct scholarly investigations, which candidates can demonstrate with a doctoral degree.





# PUBLIC HEALTH (continued)

## CAPELLA UNIVERSITY PUBLIC HEALTH DOCTORAL DEGREE

### DOCTOR OF PUBLIC HEALTH (DrPH)

This program provides students with the knowledge, theory, and methods used to promote population and community health. It includes a focus on public health policy development, the role and function of advocacy in public health, use of evidence to drive system change, and the importance of working with stakeholders to influence changes that can positively impact population and community health.

#### **Successful graduates are prepared to:**

- Evaluate policy efforts that promote healthy behaviors for disadvantaged communities.
- Advocate for promotion of healthy behaviors in organizations that facilitate healthy practices.
- Lead communities in achieving optimal levels of health.



# WHY SHOULD YOU CHOOSE CAPELLA?

**Degree programs** aligned to industry standards.

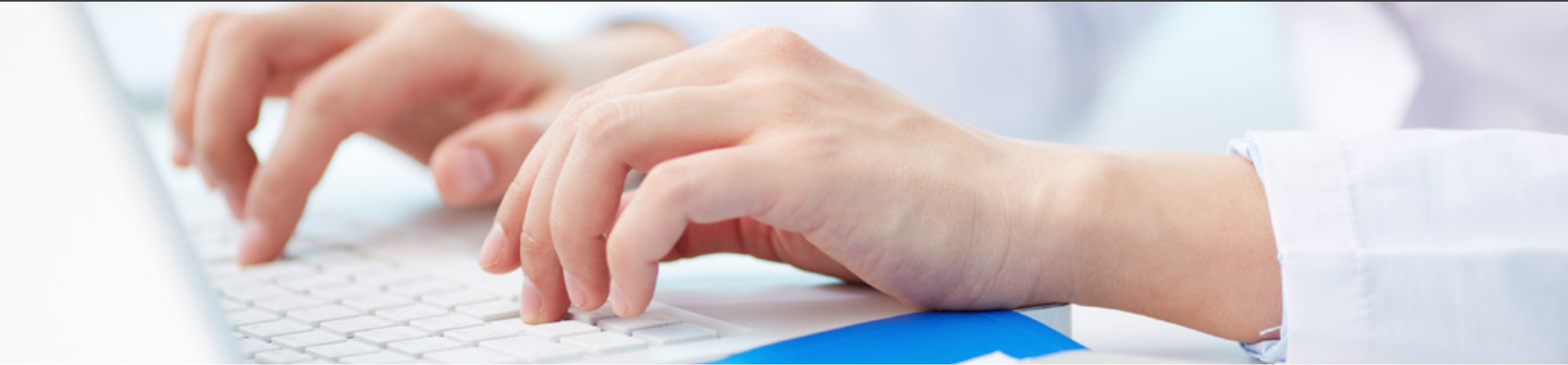
**Learning experiences** that can be applied immediately in the field.

**Up-to-date curriculum** and knowledgeable faculty who are industry experts.

**The most direct path** to your goals with 24-hour access to online courses for the ultimate flexibility.

**An affordable education** with many financial support options.





## WHAT SETS CAPELLA APART?

Capella offers accredited health administration, mental health, and public health doctoral programs aligned to professional standards.

As an [accredited online university](#), we ensure every degree awarded is relevant, recognized, and respected. In addition to our regional accreditation, Capella has achieved several specialized and program-specific accreditation, including:

- Capella University's PhD in Counselor Education and Supervision, MS in Mental Health Counseling, MS in School Counseling, and MS in Marriage and Family Counseling/Therapy programs are accredited by the American Counseling Association's Council for Accreditation of Counseling and Related Educational Programs <http://www.cacrep.org> through March 31, 2020.



## THE MOST **DIRECT PATH** TO YOUR **GOALS**

Capella's approach to education is designed around the critical skills, knowledge, theories, and abilities — or competencies — required to master the subject matter in your degree program. You gain the relevant competencies you need to advance your career, and in the most efficient way.







## RELEVANT CURRICULUM, **EXPERT FACULTY**

Capella's curriculum is designed by industry experts and developed around the latest standards in the field to ensure you'll gain the most relevant skills and knowledge you need to succeed in your career.

Plus, each faculty member holds a doctoral degree and has expertise gained through relevant experience in their field.

## AFFORDABILITY

Capella offers a per-credit cost with a variety of ways to make your degree even more affordable.



### SCHOLARSHIPS

Capella offers several scholarship opportunities for new students to save thousands on their degree. And the best part: scholarships never need to be paid back.



### EMPLOYER AND ASSOCIATION DISCOUNTS

Tuition discounts from Capella-affiliated employers, colleges, and professional associations can make your degree more affordable. Many employers offer tuition reimbursement to their employees — even those without a formal program. Check with your HR department or manager to see if you are eligible.



### MILITARY DISCOUNT

Capella offers a discount of 10 percent to 15 percent to members of the military.





# RESOURCES

## PROGRAMS

### Health Administration

[DHA in General Health Administration](#)

[DHA in Health Care Leadership](#)

[DHA in Health Policy and Advocacy](#)

[DHA in Health Care Quality and Analytics](#)

### Mental Health

[DSW](#)

[PsyD in Clinical Psychology](#)

[PhD in Counselor Education and Supervision](#)

### Public Health

[DrPH](#)

[Online learning at Capella](#)

[Scholarships for new students](#)

[Try a Capella trial course](#)

[Learn more about Capella](#)



**TALK TO A CAPELLA  
ENROLLMENT COUNSELOR:**

**1.866.933.5819**

[CAPELLA.EDU](#)

[REQUEST INFORMATION](#)

See graduation rates, median student debt, and other information at [www.capellaresults.com/outcomes.asp](http://www.capellaresults.com/outcomes.asp)

ACCREDITATION: Capella University is accredited by the Higher Learning Commission.  
HIGHER LEARNING COMMISSION: <https://www.hlcommission.org>, 800.621.7440  
CAPELLA UNIVERSITY: Capella Tower, 225 South Sixth Street, Ninth Floor, Minneapolis  
MN 55402, 1.888.CAPELLA (227-3552)

© 2016 Capella University | 16-8802c